



WAYNE COMMUNITY SCHOOLS

BROWN BAG LUNCH COMMUNITY MEETING

INTRODUCTION AND PURPOSE OF MEETING

INTRODUCTIONS:

PURPOSE:

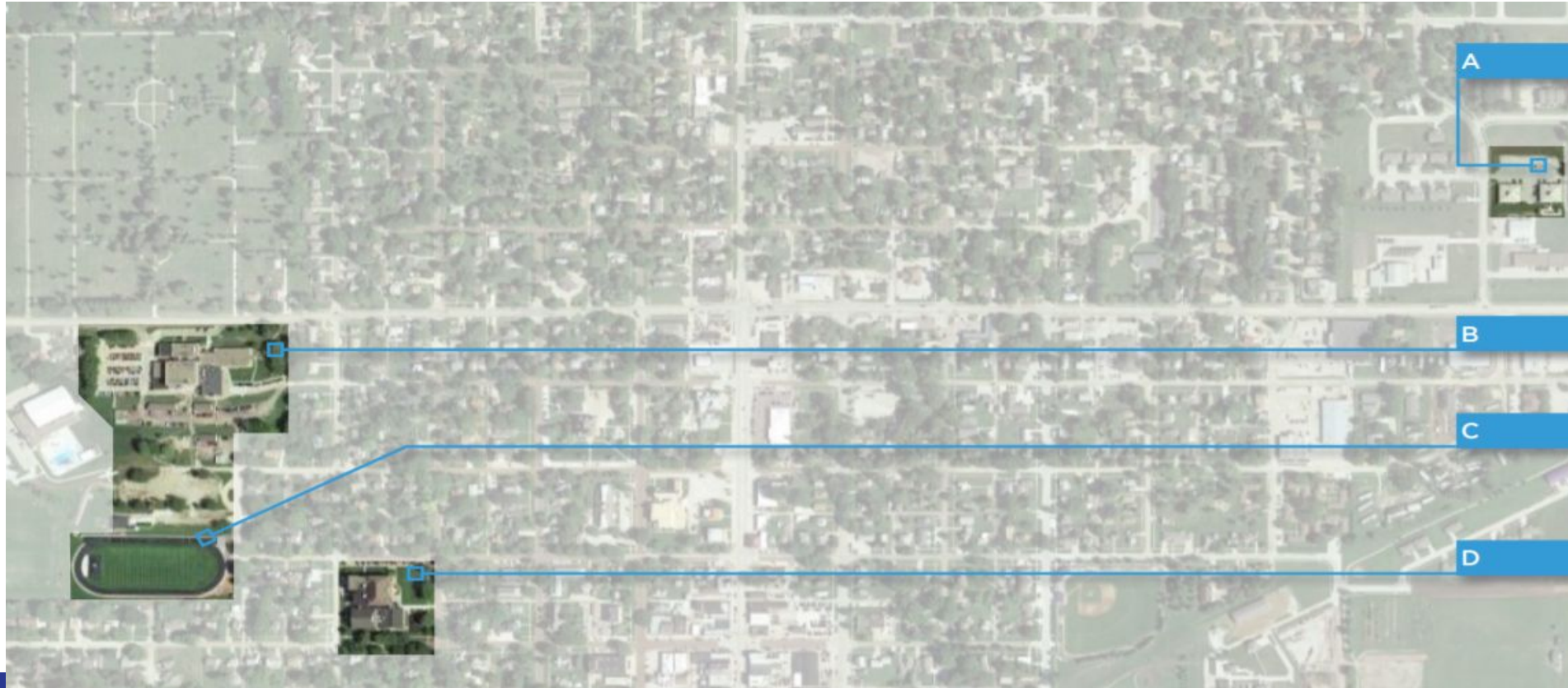
Wayne Community Schools is experiencing consistent growth, especially at the preschool and elementary grades. Due to this growth, the board commissioned a study to review current facilities as well as current and anticipated needs.





Fig. 2.1.1: Historic postcard showing original building, Photo Courtesy of: <https://picclick.com/NE-Wayne-Nebraska->

REVIEW OF CURRENT FACILITIES



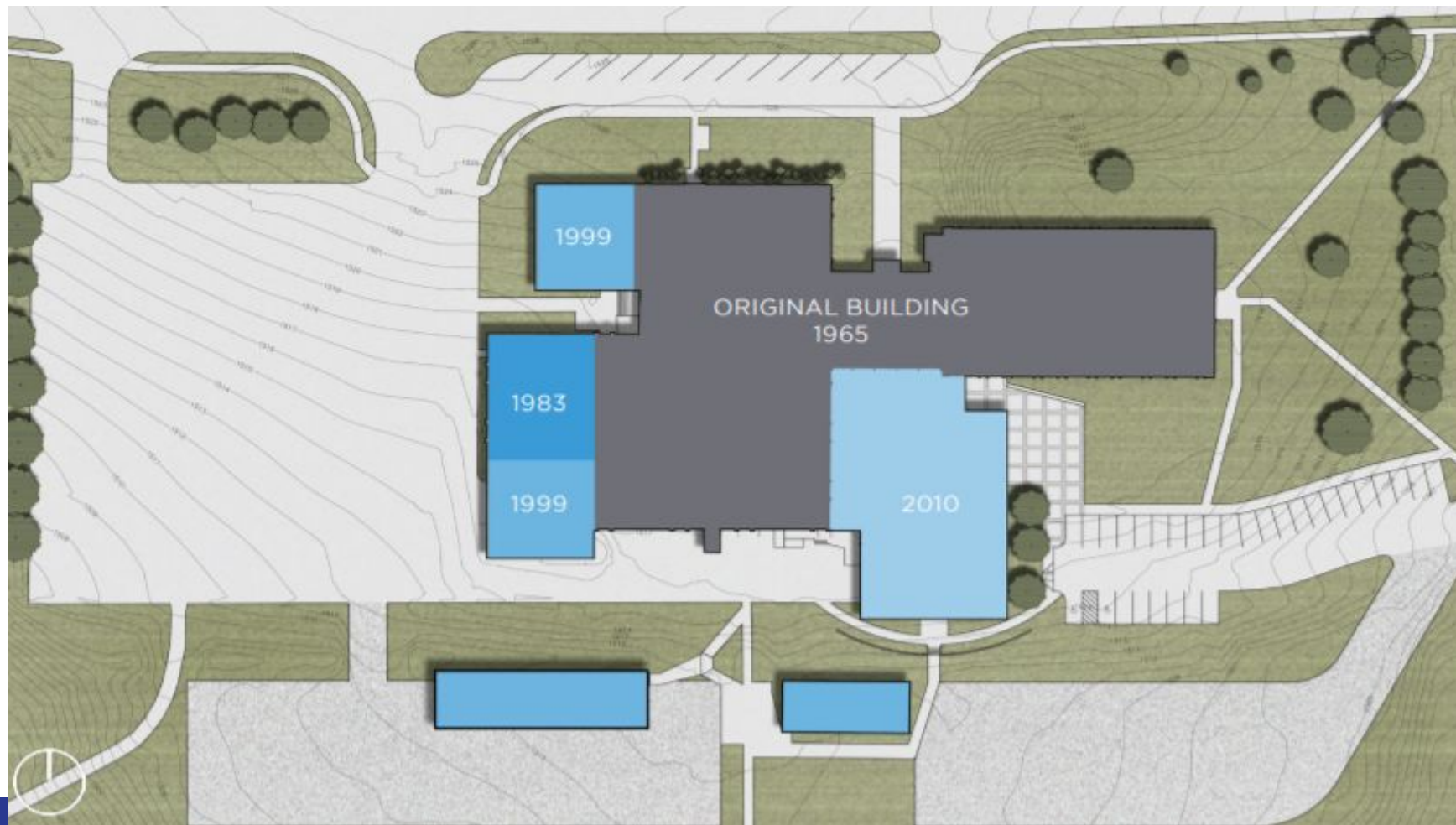




Fig. 3.1.2: West Elevation, 2013



Fig. 3.1.3: Cafeteria, 2013



Fig. 3.1.4: Reception, 2013



Fig. 3.1.5: Hall of Fame Wall, 2013





SHORTCOMINGS - JR/SR HIGH

LACK OF SPACE FOR PHYSICAL EDUCATION/AFTER SCHOOL PRACTICES

CONCERT SPACE - GYMNATORIUM

SAFETY DURING EVENTS

ACCESS TO WEIGHT ROOM/WRESTLING ROOM

SCIENCE LABS OUTDATED AND NOT TOGETHER

ART ROOM SIZE INSUFFICIENT TO MEET STUDENT NEEDS

AG/FFA SPACE LIMITED - NEED FOR LAB AREA

2ND FLOOR RESTROOMS

PARKING







Fig. 3.2.2: Exterior front facade showing 1923 Building and 2010 Addition, 2013



Fig. 3.2.3: Lobby, 2013



Fig. 3.2.4: Classroom, 2013



Fig. 3.2.5: Classroom, 2013



SHORTCOMINGS - ELEMENTARY

CLASSROOM SPACE FOR LOWER ELEMENTARY

K & 1 NEED 1ST FLOOR FIRE ESCAPE

EXPANSION OF SPED AND EL PROGRAMS HAS LIMITED SPACE

INTERVENTION SPACE - CURRENTLY USING HALLWAY

BAND/MUSIC/ART SPACE

LUNCHROOM SIZE

PARKING/PICK-UP/DROP-OFF







Fig. 3.3.4: Classroom, 2019



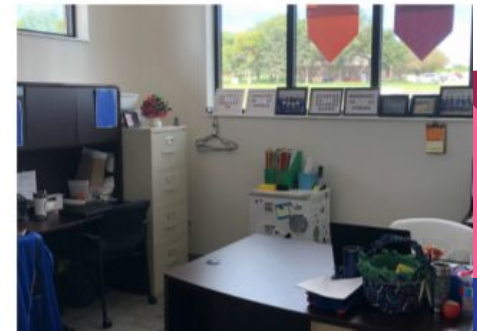
Fig. 3.3.5: Playground, 2019



Fig. 3.3.6: Exterior, 2019



Fig. 3.3.7: Active Learning Space, 2019



SHORTCOMINGS - EARLY LEARNING CENTER

OFF CAMPUS

AT CAPACITY

SAFETY AND SECURITY

TECHNOLOGY ACCESS TO NETWORK

RENTAL COSTS - \$60,000+ PER YEAR



NEW PROGRAMS - SPACE AND FACILITY

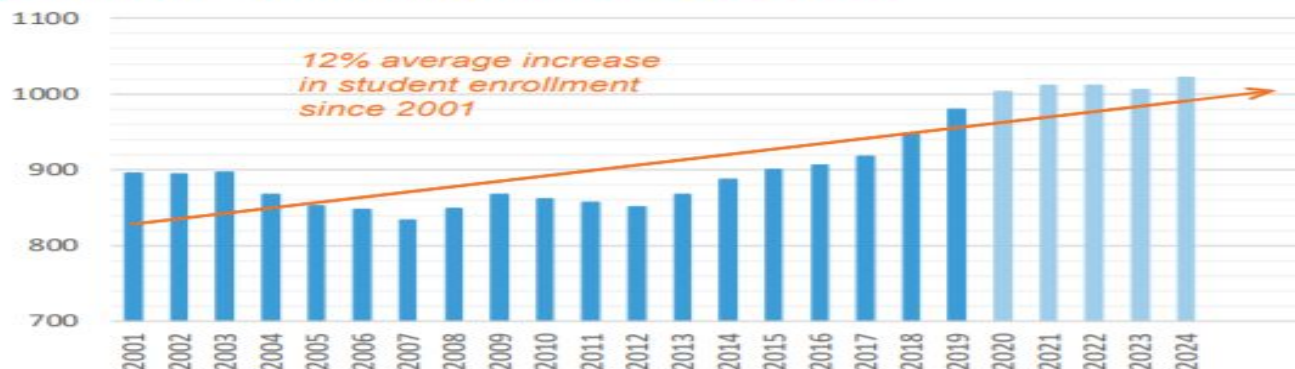
EARLY LEARNING CENTER - 3 AND 4 YEAR OLD PROGRAM IS FULL

AG/FFA

GROWTH IN LANGUAGE LEARNER PROGRAM

INCREASED ENROLLMENT IN LOWER ELEMENTARY



Figure 2.2.2: Student Enrollment (Historic + Projected)**Table 2.2.2: Student Enrollment by Grade**

	2015	2016	2017	2018	2019	2020*	2021*	2022*	2023*	2024*
Pre-K	33	28	34	31	40	40	40	40	40	40
Kinder.	65	65	54	84	54	85	75	75	75	75
Grade 1	65	65	67	61	84	65	85	75	75	75
Grade 2	65	65	68	71	57	84	65	85	75	75
Grade 3	56	65	70	65	76	60	84	65	85	75
Grade 4	51	56	69	71	68	75	60	84	65	85
Grade 5	74	51	57	69	75	70	75	60	84	65
Grade 6	64	74	60	58	78	75	70	75	60	84
Elementary	473	469	479	510	532	554	554	559	559	574
Grade 7^	61	64	82	64	61	83	80	75	80	65
Grade 8	72	61	72	85	65	65	83	80	75	80
Grade 9	65	72	69	80	85	64	65	83	80	75
Grade 10	64	65	82	72	82	85	64	65	83	80
Grade 11	80	64	70	78	73	80	85	64	65	83
Grade 12	64	80	64	71	82	72	80	85	64	65
Jr/Sr High	406	406	439	450	448	449	457	452	447	448
Total	879	875	918	960	980	1003	1011	1011	1006	1022

*Projections.

REVIEW OF FACILITY STUDY

SUMMER 2019 - BOARD RETREAT WITH COMMUNITY MEMBERS
RECOMMENDED FACILITY STUDY

FALL 2019 - CWP ARCHITECTS CONDUCTED THE FACILITY STUDY
INTERVIEWED BOARD MEMBERS AND STAFF DURING FALL SEMESTER

JANUARY 2020 - CWP ARCHITECTS PRESENTED STUDY FINDINGS TO BOARD



CONSIDERATIONS/RECOMMENDATIONS FROM STUDY OF FACILITIES

New Early Learning Center

New Early Learning Center with updated High School

New High School

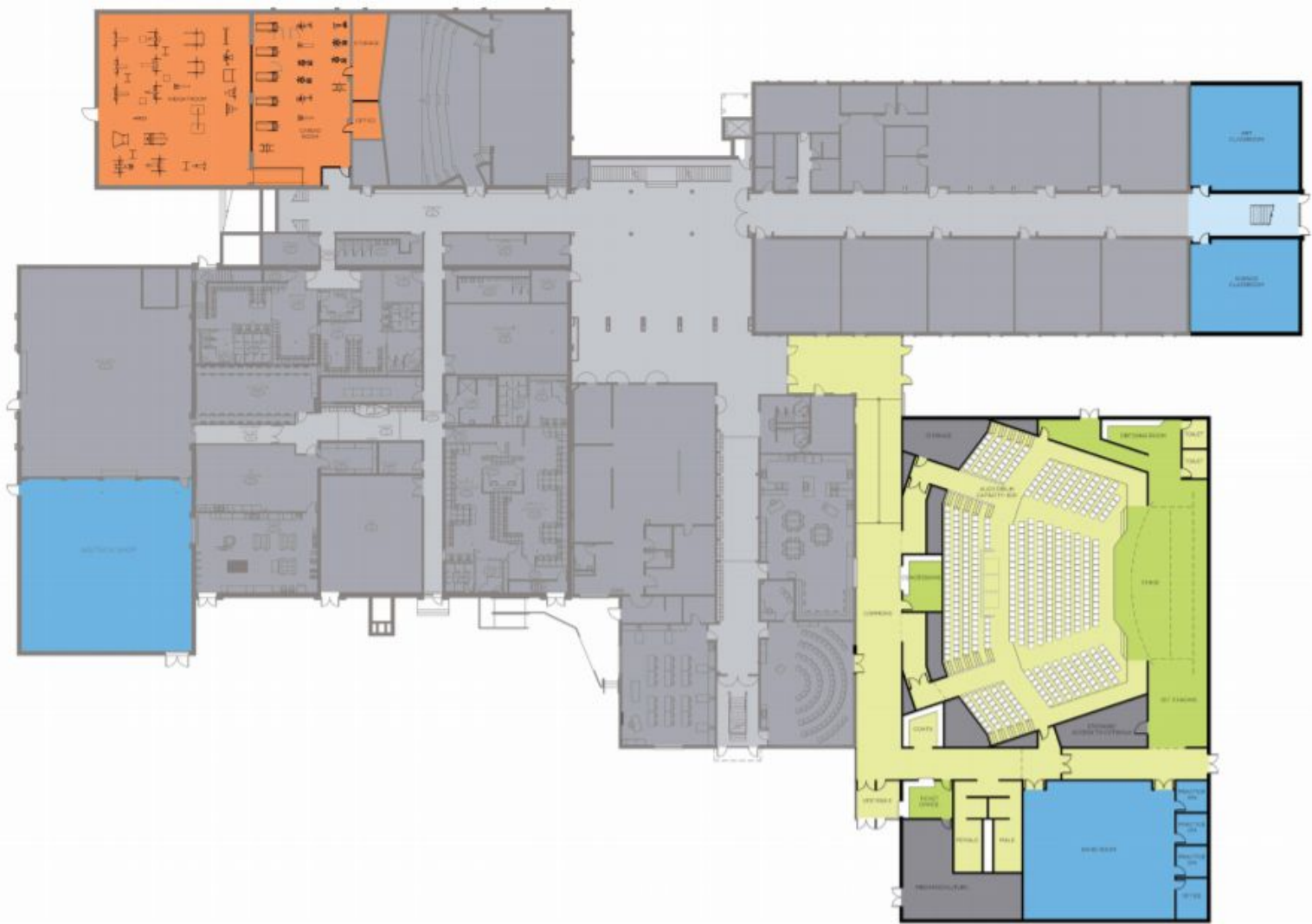


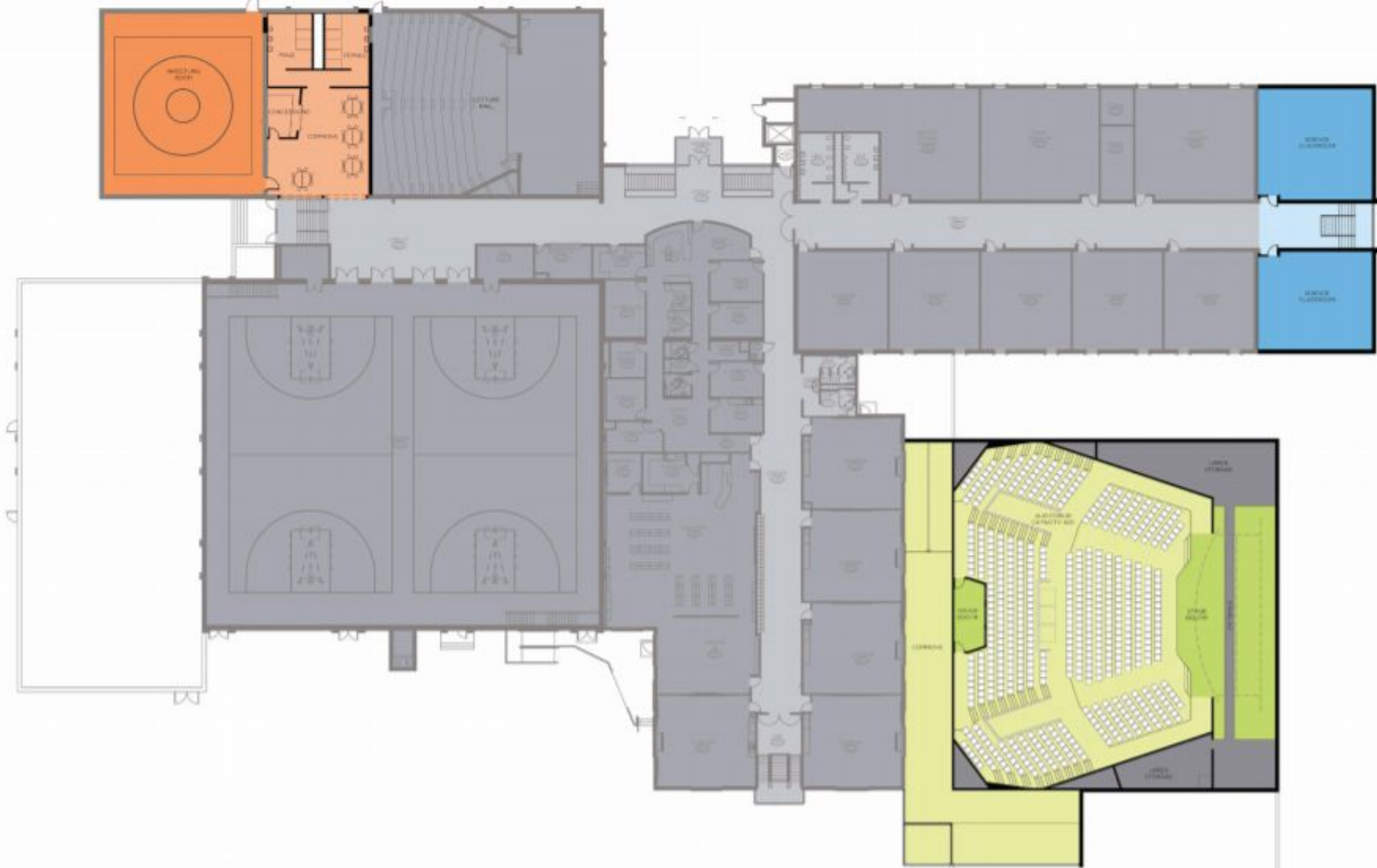


CARLSON
WEST
POVONDRA
ARCHITECTS









6.2 ESTIMATED PROJECT COST

DESIGN SOLUTION 1: NEW ELC + HIGH SCHOOL ADDITIONS / RENOVATIONS

The estimated construction cost for a new Early Learning Center would be as follows:

Early Learning Center	Cost Range
Base Bid	
	\$5,300,000 to \$5,800,000
Construction Value	\$6,100,000 to \$6,700,000
Total Project Cost	
Alternate Design	
	\$6,700,000 to \$7,400,000
Construction Value	\$7,700,000 to \$8,500,000
Total Project Cost	

Together these conceptual renovations, additions, and new construction make up Alternate Design Solution 1.

If the district were to pursue Early Learning Center (Alternate Design), the new performing arts wing, the two story classroom addition, and the interior renovations the Estimate of Probable Cost would be as follows:

The estimated construction cost for the proposed additions and renovations to the high school would be as follows:

High School	Cost Range
New Performing Arts Wing	
	\$7,300,000 to \$8,300,000
Construction Value	\$8,400,000 to \$9,500,000
Total Project Cost	
New Two Story Classroom Addition	
	\$1,400,000 to \$1,700,000
Construction Value	\$1,600,000 to \$2,000,000
Total Project Cost	
Interior High School Renovations	
	\$1,900,000 to \$2,200,000
Construction Value	\$2,200,000 to \$2,550,000
Total Project Cost	

Design Solution 1	Total Cost Range
Construction Value	\$17,300,000 to \$19,600,000
Total Project Cost	\$19,900,000 to \$22,550,000

DESIGN SOLUTION 2: NEW HIGH SCHOOL

The estimated construction cost for the new High School Program, **excluding land acquisition costs**, would be as follows:

Design Solution 2	Total Cost Range
	\$34,700,000 to \$37,900,000
Construction Value	\$39,900,000 to \$43,600,000
Total Project Cost	